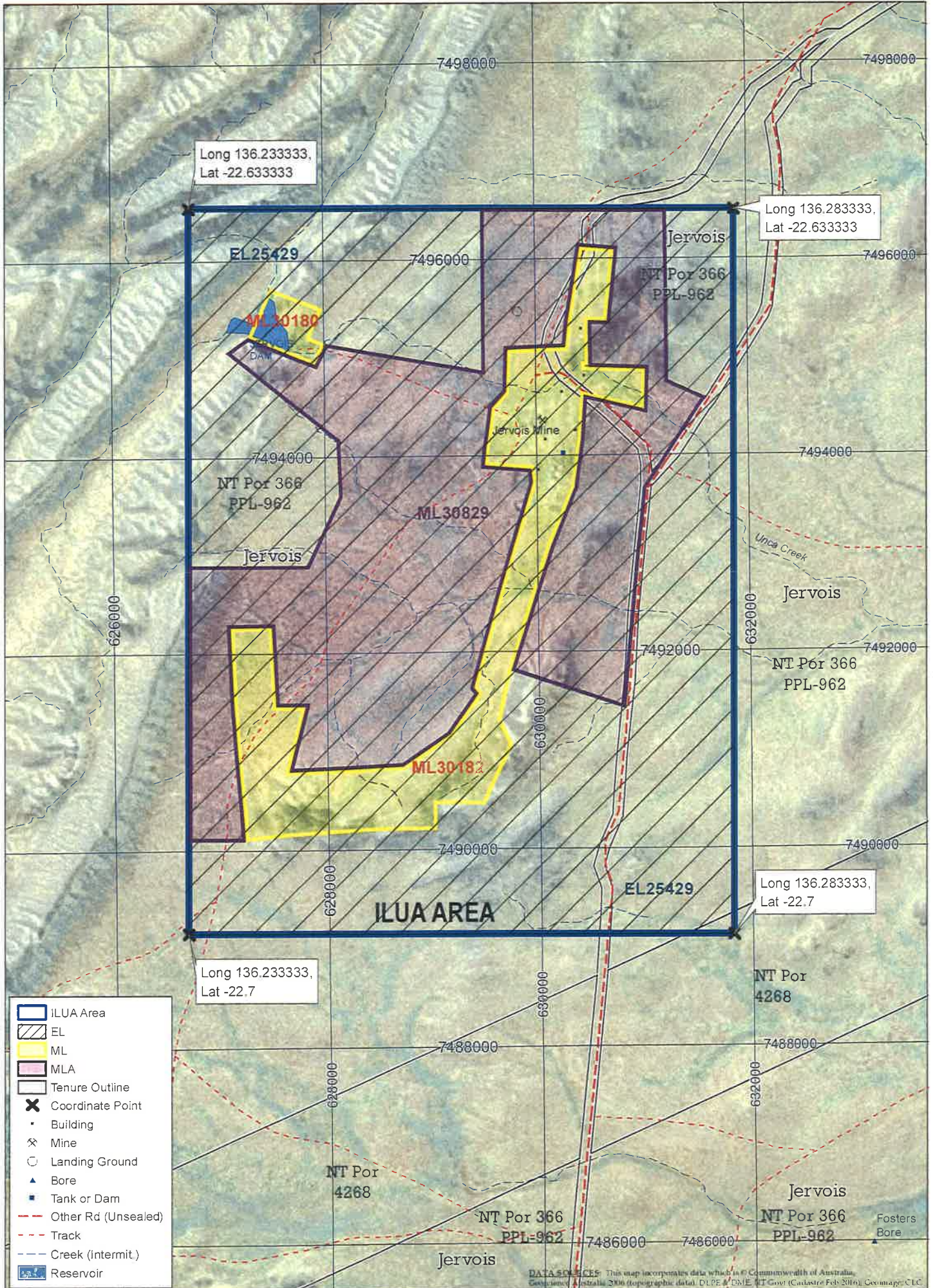
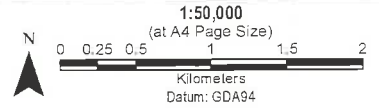




Map Number: 2016-036
 Produced 03/03/2016 ©CLC 2016

ILUA Area



- ILUA Area
- EL
- ML
- MLA
- Tenure Outline
- ✕ Coordinate Point
- Building
- ⛏ Mine
- Landing Ground
- ▲ Bore
- Tank or Dam
- Other Rd (Unsealed)
- Track
- Creek (Intermit)
- Reservoir

Description of ILUA area

The boundary of the ILUA area commences on the north-western corner of EL25429 at longitude 136.233333, latitude -22.633333. It then travels east to the north-eastern corner of EL25429 at longitude 136.283333, latitude -22.633333. From that corner, it then travels in a southerly direction to the south-eastern corner of EL25429 at longitude 136.283333, latitude -22.7. It then travels west to the south-western corner of EL25429 at longitude 136.233333, latitude -22.7. From that corner it then travels north along the western boundary of EL25429 back to its commencement point on the north-western corner of EL25429 at longitude 136.233333, latitude -22.633333.

Reference Datum and Data Source

The above mentioned geographic coordinates are in decimal degrees, GDA 94 datum.

The parcel referred to above was sourced from the Northern Territory Government's Department of Mines and Energy, in shapefile format, in March 2016.